



I'M THE GUY
WHO MAKES SURE, THAT
YOU ARE NOT COMING ANY
CLOSER THE MANOR THAN THIS,
HOTHER.

I'M GOING TO THE MANOR,
GIANT, SO YOU'LL HAVE TO
MOVE!

YOU'RE NOT
GETTING PAST,
HOTHER.

THEN YOU
WILL TASTE MY
BLACK SWORD!

ATTACK!







HIS NAME IS
HOTHER. HE MUST NOT
DIE! HE'S NOT WHAT
YOU THINK...

KEEP HIM AWAY
FROM BALDER! HE
MUST NOT DIE!..

WHO ARE YOU,
HOTHER? AND WHERE
DID YOU GET A SWORD SO
POWERFUL, THAT IT CAN
MATCH MY HAMMER?

BALDER?



NIGHT.



OORRH!



WHAT
HAPPENED... THE
GIANT IS GONE.



NANNA!
I HAVE TO
GO...



KING! IS
NANNA ALRIGHT?
HOTHER!
FINALLY...



NO, SHE'S NOT!
SHE NEEDS TO SLEEP,
HOTHER...
OTHERWISE SHE'LL
DIE... IT'S THE
NECKLACE,
ISN'T IT?

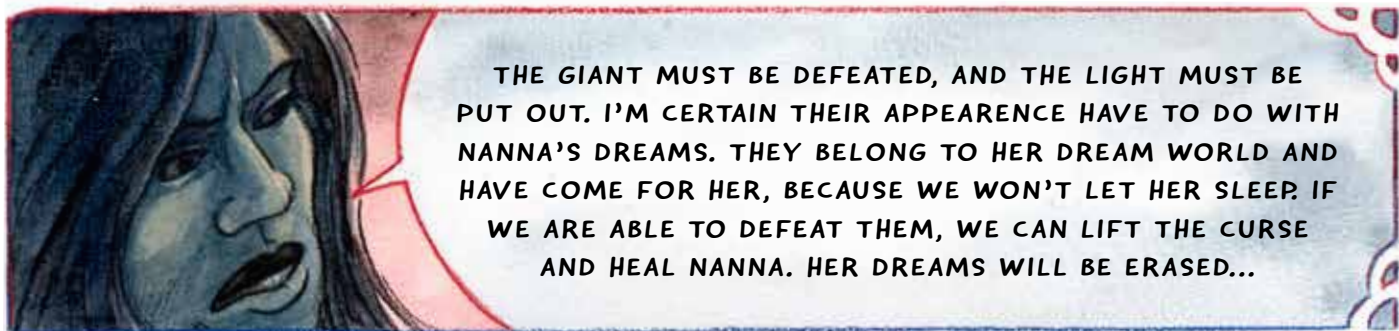


YES,
THE NECKLACE
IS CURSED... THERE'S A
GIANT RUNNING AROUND
IN THE FOREST...

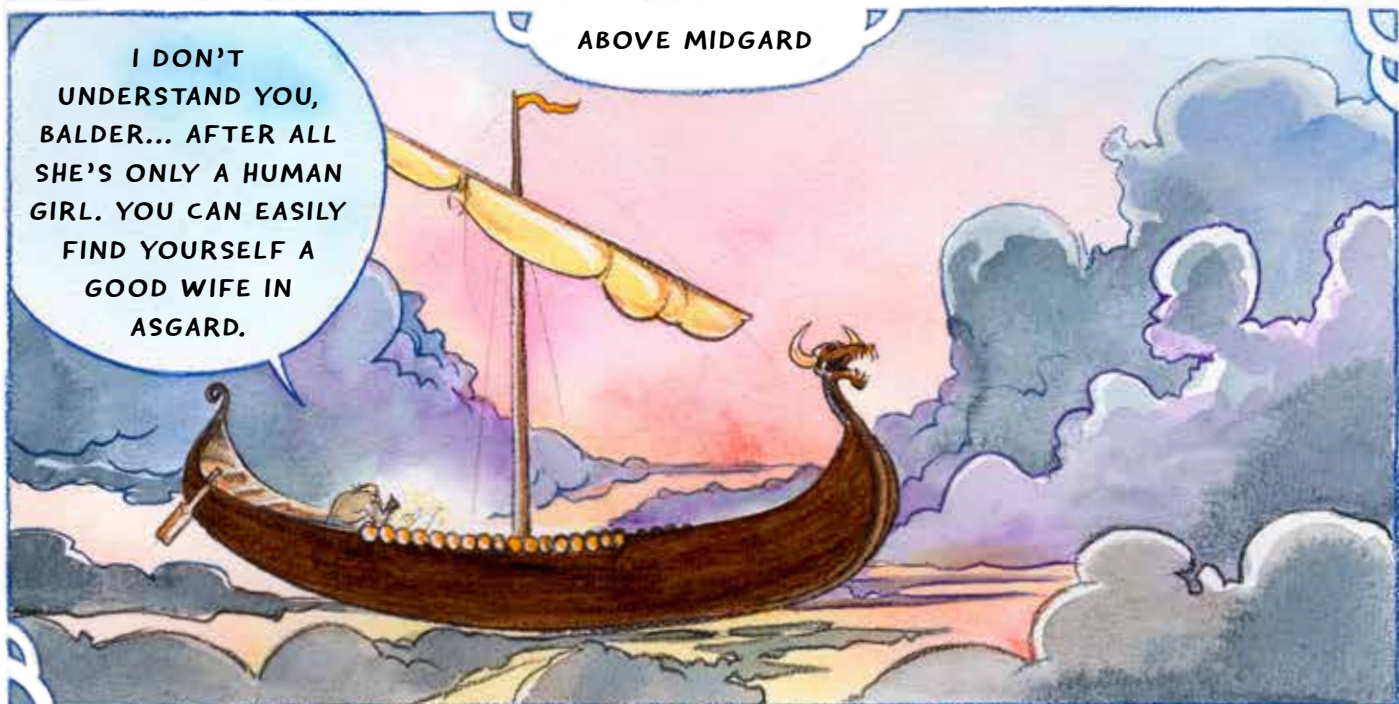


AND A
SHARP LIGHT DIVIDES
THE CLOUDS IN THE HORIZON.
WE CAN'T REMOVE THE NECKLACE
BEFORE THE CURSE IS LIFTED...
WE HAVE TO KEEP HER AWAKE. WE
SHOULD PREPARE OURSELVES.
THE GIANT WILL RETURN AND
WE MUST BE READY.



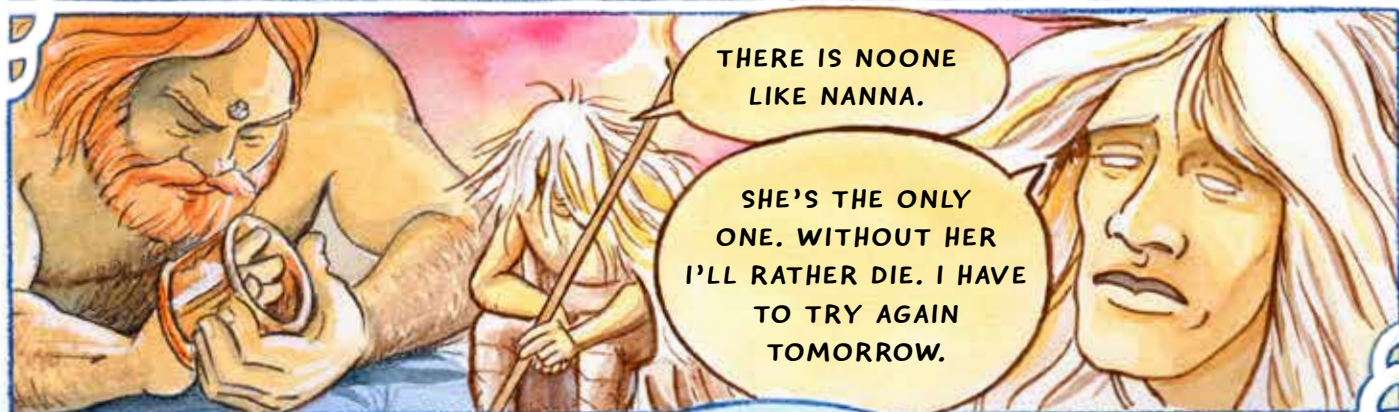


THE GIANT MUST BE DEFEATED, AND THE LIGHT MUST BE PUT OUT. I'M CERTAIN THEIR APPEARENCE HAVE TO DO WITH NANNA'S DREAMS. THEY BELONG TO HER DREAM WORLD AND HAVE COME FOR HER, BECAUSE WE WON'T LET HER SLEEP. IF WE ARE ABLE TO DEFEAT THEM, WE CAN LIFT THE CURSE AND HEAL NANNA. HER DREAMS WILL BE ERASED...



ABOVE MIDGARD

I DON'T UNDERSTAND YOU, BALDER... AFTER ALL SHE'S ONLY A HUMAN GIRL. YOU CAN EASILY FIND YOURSELF A GOOD WIFE IN ASGARD.



THERE IS NOONE LIKE NANNA.

SHE'S THE ONLY ONE. WITHOUT HER I'LL RATHER DIE. I HAVE TO TRY AGAIN TOMORROW.

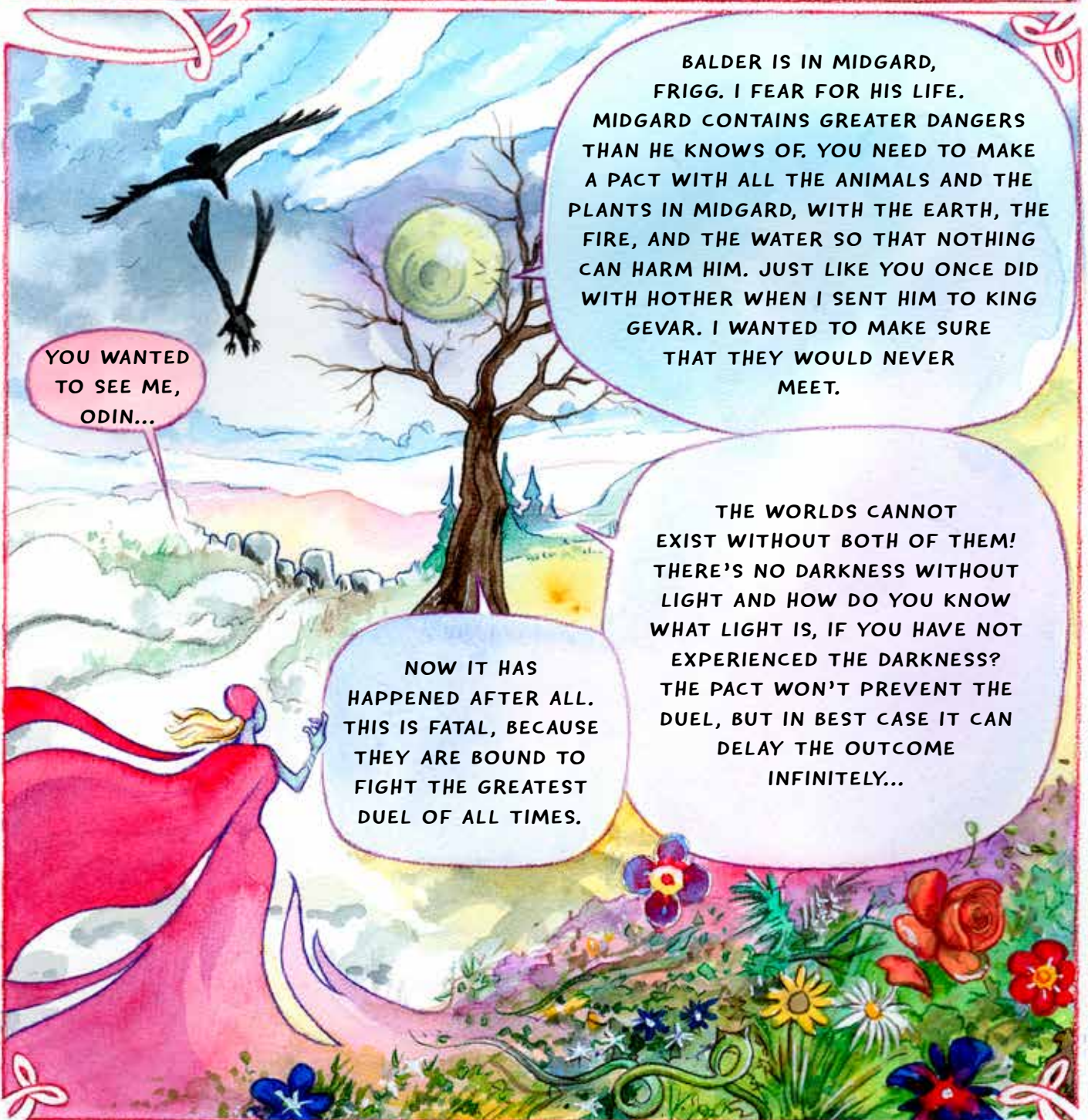


WELL, GET SOME SLEEP NOW, WE'LL TALK ABOUT IT IN THE MORNING.



HMM...NO...
SO DARK...

AAARRHH!
THE DARKNESS!



SO FRIGG SUMMONED ALL THE ANIMALS AND THE PLANTS OF MIDGARD, SHE SUMMONED THE ELEMENTS AND HAD THEM SWEAR AN OATH, THAT THEY WOULD DO NO HARM TO BALDER. UNFORTUNATELY, SHE WASN'T AWARE THAT A NEW PLANT HAD FOUND ITS WAY INTO MIDGARD. SHE DIDN'T RECEIVE AN OATH FROM THE...



MISTELTOE

